

Brock Bridge Elementary School



SCHOOL YEAR 20-21

MAY/2021

Message from the Principal...

Dear Brock Bridge Families,

I know that this past year has been a year of challenges for our students and staff. We've had to readjust what school looks like and ensure that students were successful. I appreciate everything that you have done to help our students be successful in the virtual and hybrid learning environments. We are continuing to add students to our hybrid classes, as space allows. We are hoping to have additional cohorts join us within the next week, while we review survey data and plan to see which students would be able to return to 4 days a week. At this time, we must work with the information that we have. Additional requests will be added to a wait list and will be reviewed after our current list has been reviewed.

As we prepare for the end of the school year, please continue to have your student log in daily and complete assignments in a timely manner.

Our 5th grade team is planning a virtual promotional ceremony for students and exploring other opportunities. Please look for more information in the next few weeks.

AACPS will be offering summer opportunities for students. Please check out: <https://www.aacps.org/summer>.

Thank you for your partnership.

Amy Shandrowsky, Principal.



Administration

Amy Shandrowsky,
Principal
ashandrowsky@aacps.org

Marcus Williams,
Assistant Principal
mawilliams2@aacps.org

Geoffrey Crocker,
Counselor
(Primary, Pre-K, Kindergarten, 1st and 2nd grades)
gcrocker@aacps.org

Victoria Picciano,
Counselor
(Intermediate, 3rd, 4th and 5th grades)
vpicciano@aacps.org

Office Staff

Annika Anderson,
Principal Secretary

Kathleen OBrien,
Attendance & Discipline

Tammie Mason,
Registrar

Scan to follow us
on Twitter!



Table of Contents

Page

- 1 Principal's Message
- 2 Google Meet Class Recordings
School Camera System
AACPS
Non-Discrimination
Disclaimer
Apply for Free/Reduced
Meals
- 3 FRONT OFFICE
MESSAGES
Pre-K and Kindergarten
Registration
Moving?
Contact Information
Transferring Students
- 4 FRONT OFFICE
MESSAGES
Immunization
Requirements
Year Book Photos
Needed
- 5 Message from the
School Nurse
Hybrid & Virtual
Daily Class Schedules
- 6 Calendar



Google Meet Class Recordings

As a reminder...

In the virtual learning environment, families are forbidden to record or take pictures during live lessons. Please remember that virtual classrooms are no different than building classrooms, where student privacy should be respected and upheld.

AACPS has guidance for teachers on the proper recording of lessons, should you need information refer to: (www.aacps.org/googlemeet); however, such recordings are not meant for personal nor public consumption beyond the classroom. Your cooperation in this matter is greatly appreciated for the safety and integrity of our school community.

Thank You.



School Camera System



Brock Bridge Elementary School is equipped with a video camera system. It covers selected interior and exterior public portions of the building and grounds. It is NOT monitored constantly, but it is monitored during emergency situations.

During certain events, when the safety or security of students may be in question, authorized personnel from local, state, or federal police or fire emergency units may be given access to view images projected on the camera system. If you have any questions about the system, you should call the Supervisor of School Security at 410-222-5083.



Disclaimer

AACPS Non-discrimination Disclaimer



Disclaimer

The Anne Arundel County Public School System does not discriminate on the basis of race, color, sex, national origin, religion, age, disability, sexual orientation or familial status in matters affecting employment or in providing access to programs. Questions regarding nondiscrimination should be directed to Mr. Leslie N. Stanton, Specialist in Human Relations, AACPS, 2644 Riva Road, Annapolis, MD 21401 (410) 222-5318, TDD, 410-222-5500 or www.aacps.org.

[Apply for Free/Reduced Meals:](http://aacpschools.org/nutrition/appl-for-free-or-reduced-price-meals/)

<http://aacpschools.org/nutrition/appl-for-free-or-reduced-price-meals/>

FRONT OFFICE MESSAGE

Pre-K and Kindergarten Registration for 2021-2022 School Year

Anne Arundel County Public Schools' kindergarten registration for the 2021-2022 school year is still open. Children enrolling in Pre-K must be 4 years old and Kindergarten must be 5 years old on or by September 1, 2021.

The following documents are required and will need to be uploaded when registering a child for kindergarten:

Proof of identity

* The child's original birth certificate or birth record

A copy of the child's immunization record

Two proofs of residency

* deed/lease/mortgage and current utility bill

For assistance in locating your assigned school, click on the [Locate Your School](#) link on the and the [AACPS website](#)



Registration is still being conducted virtually.
Please visit www.aacps.org/enrollment

Moving ???

If you have moved or are in the process of moving, please provide the school office with updated paperwork and address, so we can keep your student's information accurate in our system.



In the case your student is moving to another school, please let us know so we can get the transfer packet to be sent to the other school or for pick up.

Contact Information



Please keep in mind that it is very important to keep your student's contact information up to date. If you have changed your email address and/or your phone number, please call the office and let us know. We will update our system immediately.

Transferring Students



If your student will be transferring out of Anne Arundel County, out of the State or to Monarch Global or Chesapeake Science Point, please know that your student must turn in their Chromebook to Brock Bridge Elementary by the end of June. Please see message below from The Board of Education.

AACPS Devices are provided to students enrolled in AACPS.
Per the device agreement form,

"At the conclusion of your participation in this program, your withdrawal or transfer from AACPS, or upon request by AACPS you must return this Chromebook and power adapter to the Principal/designee at your school."

Failure to do so will result in an obligation \$295.00.

Charter Schools are not owned or operated by AACPS and therefore use their own devices. Our AACPS enrolled Chromebooks will not have access to their Google portal and applications.

FRONT OFFICE MESSAGE

Immunization Requirements



All students starting Pre-Kindergarten and Kindergarten shall have 2 doses of Measles, Mumps, and Rubella (MMR) vaccine and 2 doses of Varicella (VAR) vaccine.

Enrolling students must show proof of these immunizations with either an official certificate of immunization, a photocopy of or written documentation from their physician.

Brock Bridge Elementary School's Immunization Requirements are compatible with the current recommendations of the Advisory Committee on Immunizations Practices (ACIP) of the Centers for Disease Control and Prevention (CDC).

Maryland Law allows (a) physicians to write medical exemption statements which clearly state a medical reason exists and the person cannot receive specific vaccines, and (b) parents/guardians to choose an exemption from immunization requirements for reasons of conscience, including a religious belief.



Brock Bridge is asking for photos of our students for our yearbook!

Please email pictures of your child to their home room teacher that showcase their memories with their classmates and academic accomplishments. These photos maybe include but not limited to siblings or other students who attend Brock Bridge reading, working on Chromebooks or enjoying time together in the community. Thank you for your support.

Deadline for submissions is May 14th, 2021.

Please send a photo of your student for inclusion in the yearbook ASAP.



Here are a few things to consider when taking photos:

- Take the picture in natural sunlight. Have the light shine on the face, not be behind them.
- Do not wear a hat or mask.
- Students may be interacting in class time, reading, posing with friends etc.
- Include space above the head and photograph the upper torso down to the waist.
- Backgrounds should be school appropriate and not distracting.
- Include the person's first and last names. Staff members should include name and title.
- Email the photo at the highest resolution possible.
- If you had a photo taken by a professional photographer, make sure it is not copyrighted.

Pictures taken off school grounds or pre-covid may have groups of children within a 6 foot distance.

HEALTH ROOM MESSAGE

Message from the School Nurse



Hi Brock Bridge Families:

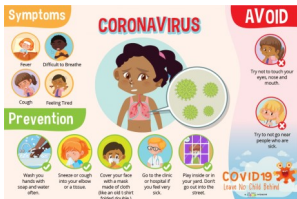
As we start to get warmer and sunnier weather, please remember to apply sunblock in the mornings prior to coming to school or playing outside. This can help to prevent sunburn that can cause itchy or irritated skin.



Along with the warmer weather, also comes seasonal allergies for many of our students. Allergies can cause a multitude of symptoms including sniffing, sneezing, coughing, itchy eyes, puffy eyes, post nasal drip, headaches and earaches, to name a few. Some of these symptoms can be similar to those of COVID-19. Be sure to consult with your doctor about the best treatment options and limit your time outdoors on the days your allergen counts are high. You can check daily particulate counts, usually listed after most televised weather reports. Be sure to take prescribed medications as indicated to get your day started right!



For parents of hybrid students, if your student is experiencing any of the following symptoms:



Cough
Difficulty Breathing
Chills/Shaking Chills
Sore Throat
Nausea/Vomiting
Fatigue

Shortness of Breath
Fever 100.4 or Higher
Muscle Aches
Headache
Diarrhea
Congestion/Runny Nose
New Loss of Taste or New Loss of Smell

Please refrain from sending your student to school until symptoms subside.
If your student's symptoms worsen or if they develop new symptoms,
please contact your student's pediatrician.
Thank you for helping us keep our students and staff healthy and safe!

| Schedule Primary (K-2) | | | |
|----------------------------------|--------------------------|----------------------------------|-----------------------------------|
| HYBRID | | VIRTUAL | WEDNESDAY |
| Student Arrival: 9:00 - 9:15 | Hybrid Only | | |
| Welcome to Learning: 9:15-9:30 | Hybrid Only | | Office Hours 9:15-9:40 *By invite |
| Community Circle: 9:30-9:50 | Virtual Students Join | Community Circle: 9:30-9:50 | Community Circle 9:40-10:05 |
| General Instruction: 9:50- 11:55 | Hybrid & Virtual | General Instruction: 9:50- 11:55 | General Instruction 10:05-11:45 |
| Lunch/Recess: 11:55 - 1:25 | Virtual Students Log-Off | Lunch/Recess: 11:55 - 1:25 | |
| General Instruction 1:25 -3:35 | Virtual Students Join | General Instruction 1:25 -3:35 | |
| Dismissal: 3:40 | Hybrid Only | | |

Brock Bridge Elementary Daily Class Schedules

| Schedule Intermediate (3-5) | | | |
|-----------------------------------|--------------------------|-----------------------------------|--|
| HYBRID | | VIRTUAL | WEDNESDAY |
| Student Arrival: 9:00 - 9:15 | Hybrid Only | | |
| Community Circle: 9:15-9:35 | Virtual Students Join | Community Circle: 9:15-9:35 | Community Circle & General Instruction: 9:15-11:45 |
| General Instruction: 9:35 - 12:05 | Hybrid & Virtual | General Instruction: 9:35 - 12:05 | |
| Lunch/Recess: 12:05 - 1:30 | Virtual Students Log-Off | Lunch/Recess: 12:05 - 1:30 | |
| General Instruction: 1:30 - 3:35 | Virtual Students Join | General Instruction: 1:30 - 3:35 | |
| Dismissal: 3:40 | Hybrid Only | | |



MAY 2021



| Sun | Mon | Tue | Wed | Thu | Fri | Sat |
|-----|-------------------------------|-----|-----|---|--|-----|
| | | | | | | 1 |
| 2 | 3 | 4 | 5 | 6 <i>Community sponsored food distribution</i> | 7 <i>Interims sent home</i> Progress REPORT | 8 |
| 9 | 10 | 11 | 12 | 13 <i>Community sponsored food distribution</i> | 14 | 15 |
| 16 | 17 | 18 | 19 | 20 <i>Community sponsored food distribution</i> | 21 | 22 |
| 23 | 24 <i>Memorial Day</i> | 25 | 26 | 27 <i>Community sponsored food distribution</i> Spring Conferences for Pre-K, K & ECI. Schools closed for those Students | 28 | 29 |
| 30 | 31 | | | | | |